

Crescent Lake Snowmobile Overpass Project

Scott Riley, USFS

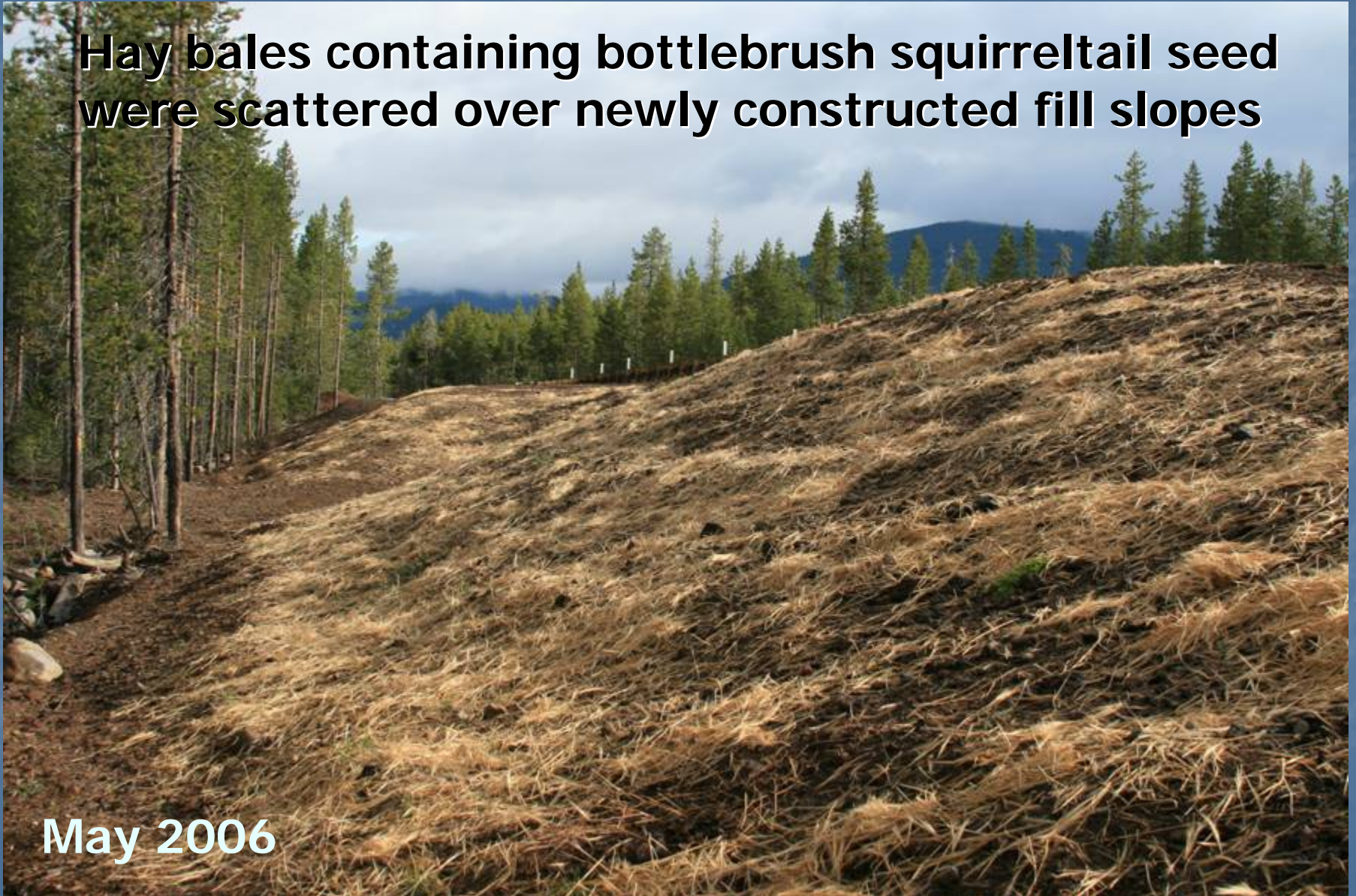


May 2006 – June 2007

Compost Trial

**Hay bales containing bottlebrush squirreltail seed
were scattered over newly constructed fill slopes**

May 2006



Compost containing native seed was then pneumatically installed over the hay to a depth of 2"



May 2006

Prior to compost installation

May 2006



13 months after compost installation

June 2007



Prior to compost installation



May 2006

13 months after compost installation

June 2007



Prior to compost installation

May 2006



13 months after compost installation



June 2007

Prior to compost installation

May 2006



13 months after compost installation

June 2007

June 2007

During compost installation



May 2006



**13 months after compost
installation**

June 2007

Overview north slope



June 2007



North slope

June 2007



Overview south slope

June 2007



South slope

June 2007



13 month old Oregon sunshine plant, sown with
compost May 2005

Thank you

June 2007